

# ACHIEVER

Our  
Experience  
for Your  
Choice



## BASIC USAGE

**ACHIEVER** with its economic but durable **2-stage** design is the ideal choice for forklifts that do not operate round-the-clock.

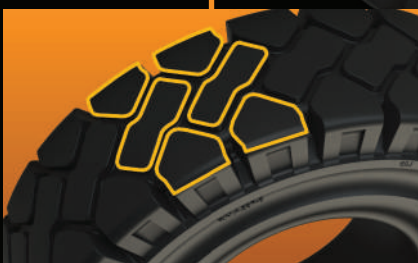


## HEAVY USAGE

**ACHIEVER PLUS** with its state of the art **3-stage** design gives best rolling resistance and low heat build-up.

### ALLROUNDER

A wide tread area with center line lugs combines traction with durability and comfort



### SOLID DESIGN

Wear and chunk resistant tread compound protects both 2- and 3-stage construction



### CEYLON RUBBER

Our tires are manufactured out of Sri Lanka's finest natural rubber





**Made in Sri Lanka** - Our refined manufacturing process with the finest of Sri Lankan natural rubber has helped us produce millions of solid industrial tires under strict quality control. We utilize only the best chemicals approved by the European Chemical Directive (REACH). Most modern laboratory and test equipment complete our ISO 9000:2015 company.



The ACHIEVER portfolio offers a comprehensive size range available in Standard and Clip version.

All tires are designed in compliance with European Tire and Rim Technical Organisation (ETRTO) and Tire and Rim Association (TRA) specifications to ensure full load capacity and safety standards.



## ACHIEVER

Economic 2-stage design is ideal for operations of 1,000 hours per year.



## ACHIEVER

### PLUS Black

The state-of-the-art 3-stage design ensures enhanced durability in heavy-duty environments.



## ACHIEVER

### PLUS Non - marking

The non-marking compound provides all benefits of ACHIEVER PLUS while preventing tread marking on your floors.



DIMENSION		RIM WIDTH
<b>8"</b>		
4.00 - 8		3.00
12 5/75 - 8	15 x 4 1/2 - 8	3.00
150/75 - 8	16 x 6 - 8	4.33
180/70 - 8	18 x 7 - 8	4.33
5.00 - 8		3.00
<b>9"</b>		
140/55 - 9	15 x 5 1/2 - 9	4.00
200/75 - 9	21 x 8 - 9	6.00
6.00 - 9		4.00
<b>10"</b>		
200/50 - 10		6.50
6.50 - 10		5.00
225/75 - 10	23 x 9 - 10	6.50
<b>12"</b>		
7.00 - 12		5.00
250/60 - 12	23 x 10 - 12	8.00
250/75 - 12	27 x 10 - 12	8.00
<b>15"</b>		
7.00 - 15		5.50
7.50 - 15		5.50
225/75 - 15	28 x 9 - 15, 8.15 - 15	7.00
8.25 - 15		5.50, 6.50
250/70 - 15	2.50 - 15	7.00, 7.50
315/70 - 15	300 - 15	8.00
355/45 - 15	28 x 12 1/2 - 15	9.75
355/65 - 15		9.75
<b>20"</b>		
9.00 - 20		6.50, 7.00
10.00 - 20		7.00, 7.50, 8.00
12.00 - 20		8.00, 8.50, 10.00

