

ATIRE



**Paved or
Rough**

Right Tire for
Your Application

www.atire.com

FOR

PAVED

SURFACES



RUNNERSOLID

Our **RunnerSolid** is designed for typical floor conditions in heavy duty warehouses and production applications, either indoor or outdoor. You can track performance with unique tread-wear-indicator.

With this design focus, our solid tire efficiently runs up and down 24/7 with a longest life time. Therefore, we call it **ATIRE RunnerSolid**.



**EXTRA
LIFETIME**

Wide tread and maximum volume of wear resistant rubber for extra durability



**24/7
OPERATION**

Constant operation ensured by low heat built-up construction and compounds



**CEYLON
RUBBER**

Our tires are manufactured out of Sri Lanka's finest natural rubber





SMART DETAILS

All lines have easy to read wear indicators to plan maintenance



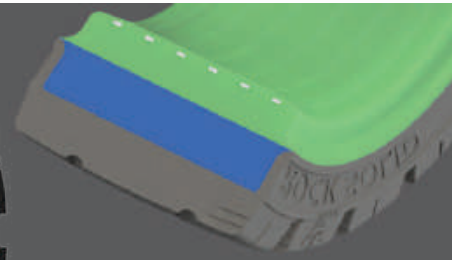
SOFT CUSHION

Higher deflection by soft cushion compound increases footprint and vehicle protection



EXTRA TRACTION

Open and deep tread pattern for maximum traction with cut resistant compound



ROCKSOLID

Heavy load material handling operations on unpaved surface conditions require maximum traction and strength as possible. Therefore, our RockSolid line has a very open and deep tread pattern.

The tread compound offers best cut and chunk resistance. Exclusively angle and designed lugs make our tire best-in-class on rough surface. Therefore, we call it **ATIRE RockSolid.**

FOR

ROUGH

SURFACES



MADE IN SRI LANKA

Our refined manufacturing process with the finest of Sri Lankan natural rubber has helped us produce millions of solid industrial tires under strict quality control. We utilize only the best chemicals approved by the European Chemical Directive (REACH).

All tires are designed in compliance with European Tire and Rim Technical Organization (ETRTO) and Tire and Rim Association (TRA) specifications to ensure full load capacity and safety standards. Our company is ISO9001:2015 certified.

ROCKSOLID



SIZE	RIM WIDTH
15"	
7.00 - 15	5.50
225/75 - 15	28 x 9 - 15, 8.15 - 15
250/70 - 15	2.50 - 15
315/70 - 15	300 - 15
355/45 - 15	28 x 12 1/2 - 15
8.25 - 15	5.50, 6.50
355/65 - 15	32 x 12.1 - 15
20"	
10.00 - 20	7.50, 8.00
12.00 - 20	8.00, 8.50, 10.00

RUNNERSOLID



SIZE	RIM WIDTH
8"	
4.00 - 8	3.00
125/75 - 8	15 x 4 1/2 - 8
150/75 - 8	16 x 6 - 8
180/75 - 8	18 x 7 - 8
5.00 - 8	3.00
9"	
140/55 - 9	15 x 5 1/2 - 9
200/75 - 9	21 x 8 - 9
6.00 - 9	4.00
10"	
200/50 - 10	6.50
6.50 - 10	5.00
225/75 - 10	23 x 9 - 10
12"	
7.00 - 12	5.00
250/60 - 12	23 x 10 - 12
250/75 - 12	27 x 10 - 12

Both lines are available in Standard and Clip. RunnerSolid also in Non-Marking



ATIRE helps customers to focus on what really matters by providing a genuine product with customer oriented service and buying experience

www.atire.com

